



## GENDER-NEUTRAL DESIGN

# Oregon High School Restroom & Locker Room Facilities

Author: Alec Holser, FAIA, Founding Partner  
Opsis Architecture

In seeking to inclusively provide for the basic needs of everyone in our community, designers and our clients have embarked on a journey to create thoughtful and functional gender-neutral restroom and locker room facilities. When well-designed, these facilities can benefit many people - transgender and gender diverse individuals who may otherwise find gender-specific facilities intimidating or unsafe as well as people who require the assistance of a caregiver of a different gender, and parents with children of a different gender.

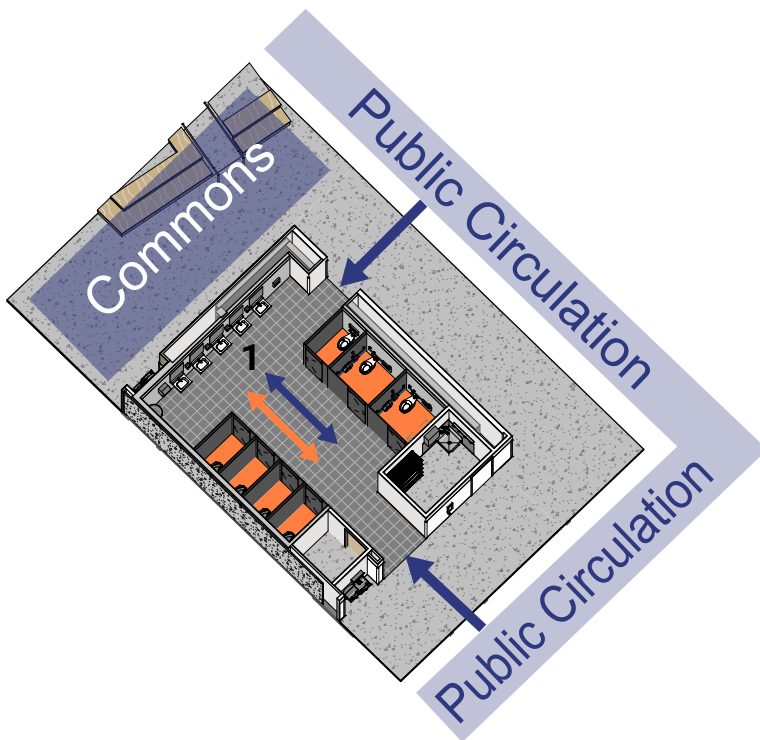
Recognizing that current building codes have not yet adapted to address these requirements, a wide range of planning and design solutions have emerged over the last several years. How these issues are resolved for different sports/athletic specific team meeting and dressing rooms has added an additional level of design exploration. While this case study focuses on how gender-neutral facilities have been created within high schools, many of the same solutions apply to other public facilities.

## Gender-Neutral Restrooms at Madison High School

Portland Public Schools (PPS) has been at the national forefront of gender-neutral restroom facility design over the last five years, a process initiated by a series of voter-approved bond measures that have allowed the District to pursue district-wide high school modernizations.

PPS's Grant High School opened in fall 2019 and is one of the first in the country to have only gender-neutral restrooms throughout the facility. These individual compartment toilet rooms and open sink areas have been well received by the students and administration during the pandemic-truncated school year [\[resource\]](#).

PPS's school design process, while based on district-wide standards, is heavily influenced by the community through the Design Advisory Group (DAG) consisting of student, parent, teacher, and community stakeholders. For the new Madison High School, Opsis Architecture worked with the DAG to conduct an extensive review of the Grant HS gender-neutral design strategies



1. Gender Neutral Restroom Stalls



MINSHENG JUNIOR HIGH SCHOOL, TAIPEI



JOHNSON HIGH SCHOOL, ST. PAUL



CARDIFF HIGH SCHOOL, WALES

Precedent of existing gender-neutral restroom facilities

and others being developed across the country. The committee opted for a solution that combines both gender-specific and gender-neutral restroom banks, a strategy they believed best reflected their community values.

Key design issues for the Madison HS restroom design included:

- Banks of gender-neutral toilet stalls utilizing zero-sightline floor-to-ceiling partition systems in lieu of fully built out tiled walls, to reduce costs and floor area.
- Every gender-specific restroom bank also includes two individual stall gender-neutral restrooms.
- Clear sightlines without doors are provided into



Madison High School  
Opsis Architecture & DAO Architecture

the sink areas (where in gender-specific restrooms bullying often takes place).

- The circulation plan creates a flow-through path to eliminate dead ends and provide greater individual safety (entry points from both ends).
- Ceiling-mounted security cameras in the corridor at restroom entry points to provide increased security.

## Gender-Neutral Locker Rooms & Team Rooms at North Eugene High School

While many design strategies for gender-neutral restroom facilities have been developed across the country in the last five years, there has been only recent attention to sports and athletic program locker and team room facilities. Prior to the enactment of Title IX in 1972, these facilities had provided disproportionately larger locker rooms and team room space for men than women. While Title IX provided for gender equity (equal access for men and women), providing safe and welcoming gender-neutral spaces has only recently been explored in the context of these facilities.

For the new North Eugene High School (NEHS), Opsis Architecture researched regional and national gender-

neutral strategies and worked with the school's planning committee to develop a plan that was flexible to meet future changes in community expectations and in the gender expression of their students.

What differentiates the team room design discussion from gender-neutral restrooms is that team rooms currently serve predominately gender-specific sports teams and the widely varying number of participants in a particular sport.

For high school facilities, the need for locker spaces has been steadily decreasing as students change and shower infrequently. This reduction has allowed for the inclusion of more diverse gender-neutral facilities within the same traditional program area. The NEHS design solution seeks to solve the following issues:

- **Common Circulation Zone**  
A key to the flexibility of gender-neutral facilities is to create a common circulation system that connects the majority of the spaces without having to enter from a gender-specific space.
- **Equal Locker Room Space**  
The district opted to continue with male and female

gender-specific locker / shower rooms facilities of exactly equal size. To address some students' comfort issues around changing within the locker rooms, changing stalls were placed along one side of the locker room.

- **Gender-Neutral Locker Rooms**

Two gender-neutral locker rooms were created, each with two toilet stalls and a single accessible shower. Our unique solution provides a second door connecting from these gender-neutral rooms to an adjacent team room, thus allowing all team members to share a team meeting space while providing separate changing/shower facilities.

- **Athletic Team Rooms**

Team rooms play host to the widest variety of uses, and designs need to consider the widely varying size of sports teams, the gender identity dynamics within those teams and the sports culture established by the school and coaching staff. Given these variables, team rooms are one of the more challenging to program and design.

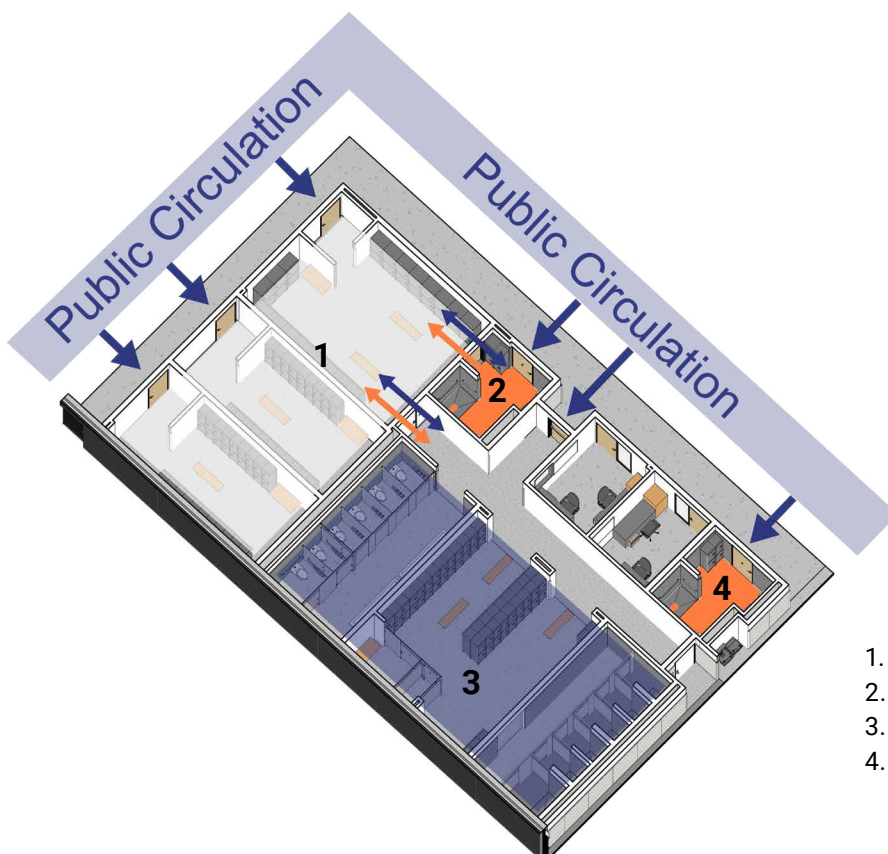
Our design for NEHS creates gender-neutral team rooms of varying sizes (one large enough for the football team) that are accessed from the common circulation zone. Two of the larger team rooms are also

connected directly into the adjacent gender-specific locker room and adjacent gender-neutral locker room. This arrangement allows for mixed gender teams to utilize the team room space for team meetings.

- **Coaches Offices / Locker Room Supervision**

Traditionally, coaches' offices have been gender-specific and included windows into the locker/ changing area for supervision. These offices have also had direct connections to a gender-specific shower and changing room. With mixed-gender coaching and teams now increasing, the NEHS design creates separate gender-neutral coaches shower facilities and limits windows only to the locker room entry.

While gender-neutral facility design is still in its infancy, the need for these inclusive environments will continue to evolve and mature through exploration of design concepts and lessons learned. The planned post-occupancy study for Madison High School will include a special in-depth focus on these facilities to determine preferences and any issues resulting from the designs.



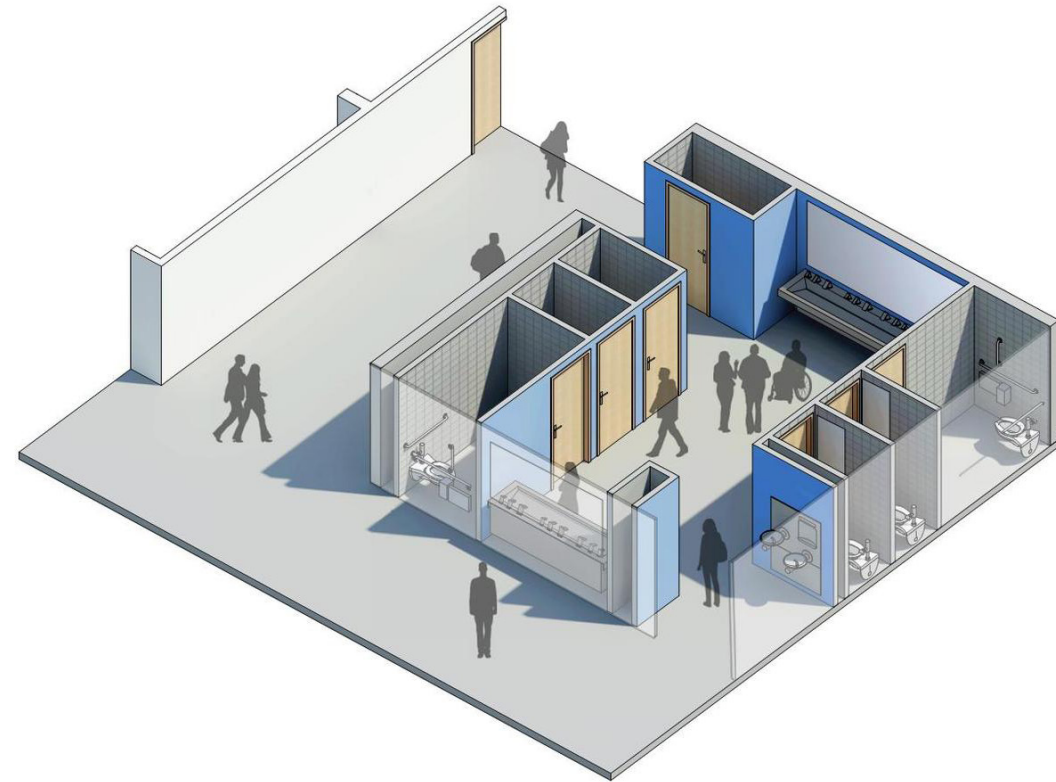
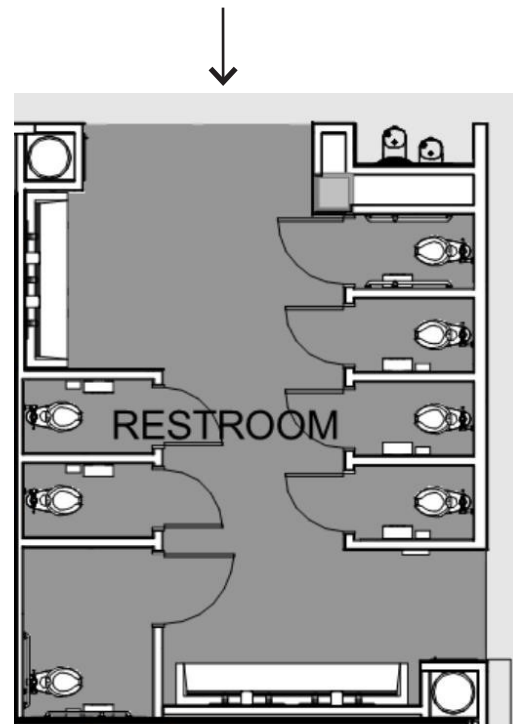
1. Gender Neutral Sports Team Rooms
2. Gender Neutral Shower/Lockers
3. Gendered Lockers Toilets & Showers
4. Gender Neutral Coaches Shower



PORTLAND PUBLIC SCHOOLS  
**MADISON HIGH SCHOOL MODERNIZATION**  
RESTROOM DESIGN STUDY  
7.23.18

OPSIS | DAO

ALL USER RESTROOMS  
CASE STUDIES



GRANT HIGH SCHOOL



MINSHENG JUNIOR HIGH SCHOOL, TAIPEI



JOHNSON HIGH SCHOOL, ST. PAUL



RHODE ISLAND SCHOOL OF DESIGN



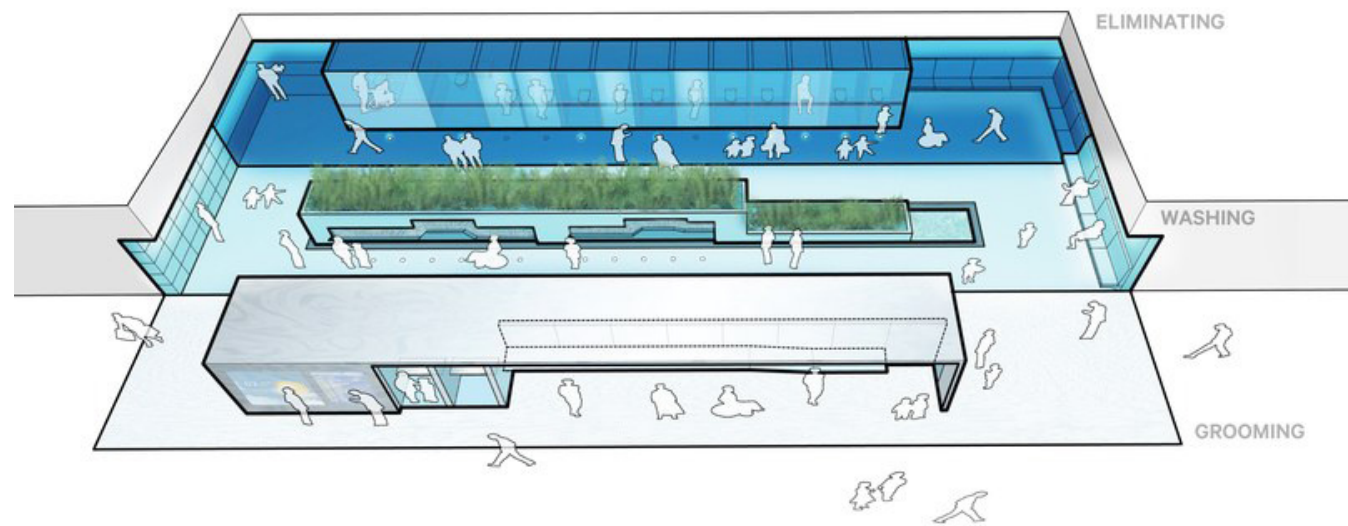
UNIVERSITY OF OREGON



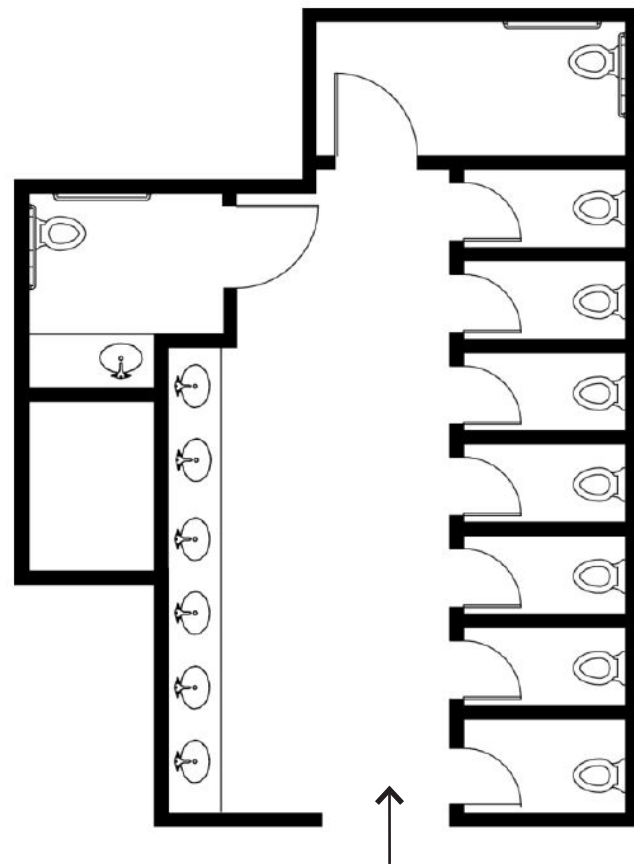
CARDIFF HIGH SCHOOL, WALES



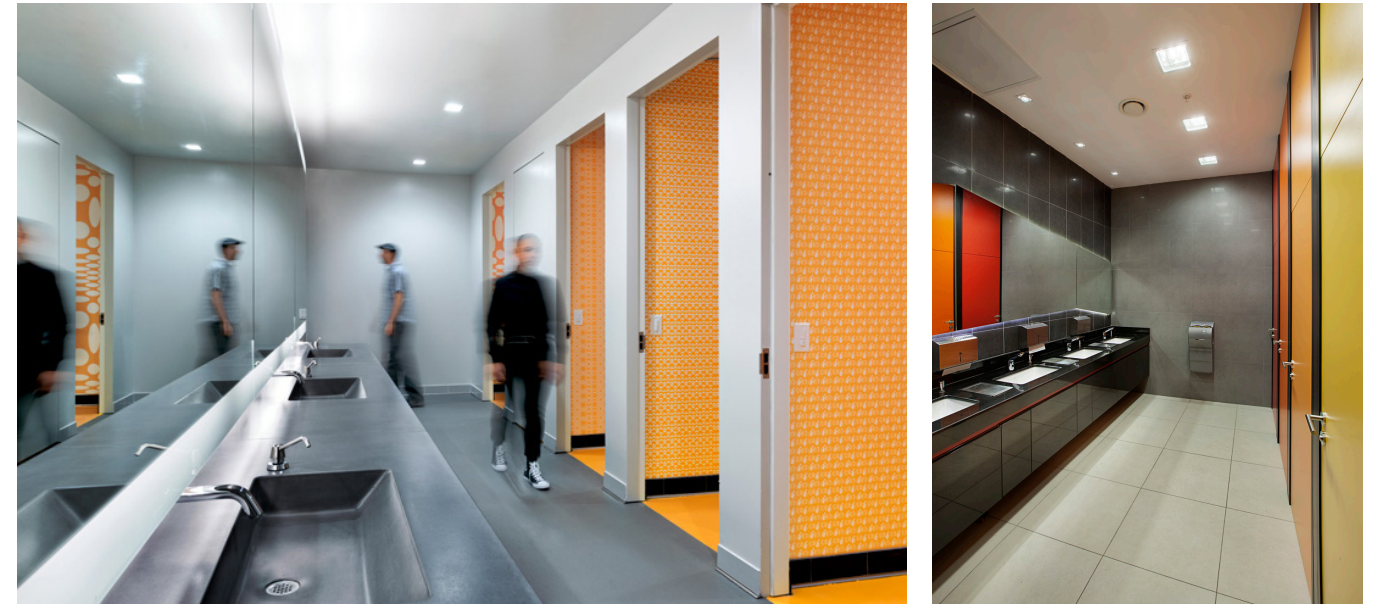
ALL USER RESTROOMS  
CASE STUDIES



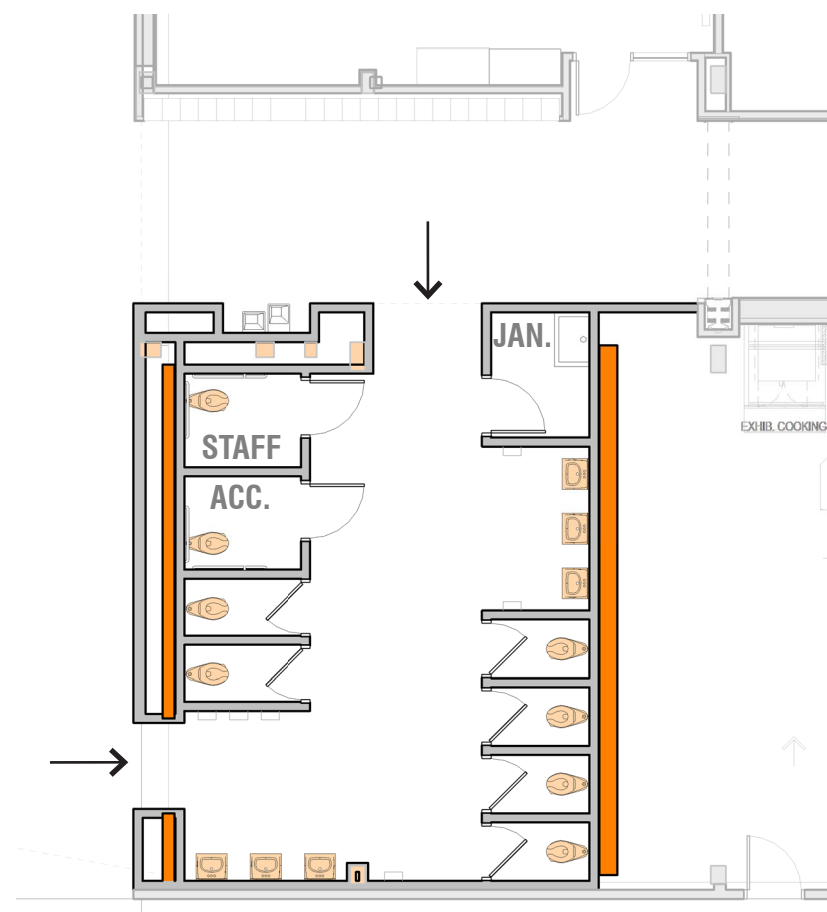
PUBLIC RESTROOM AIRPORT EXAMPLE



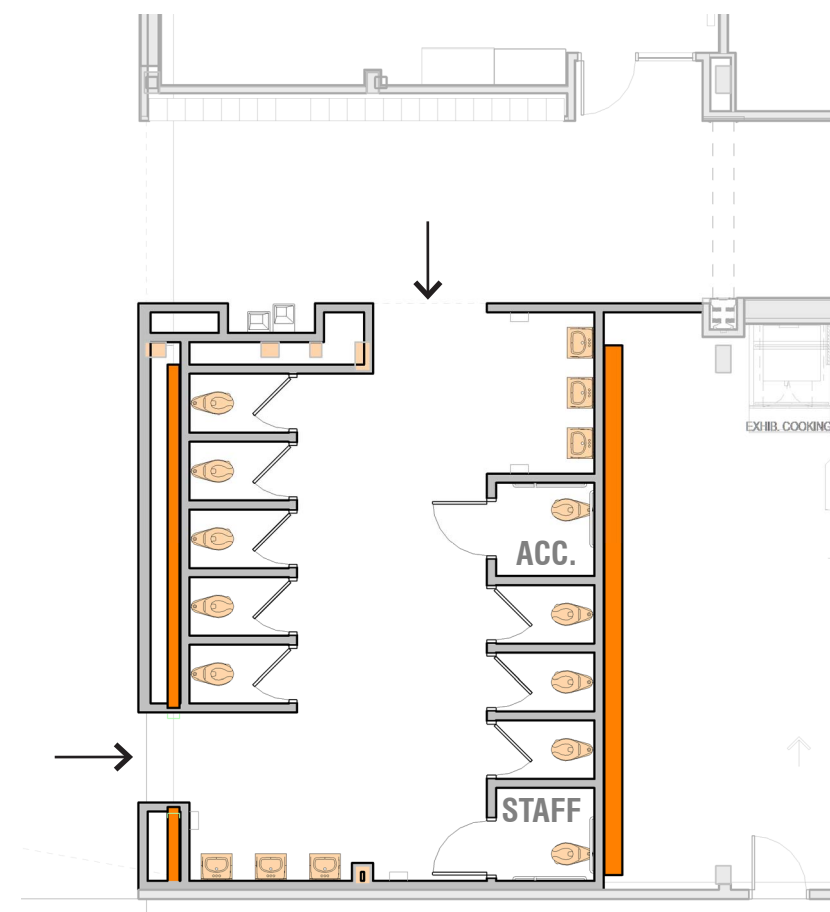
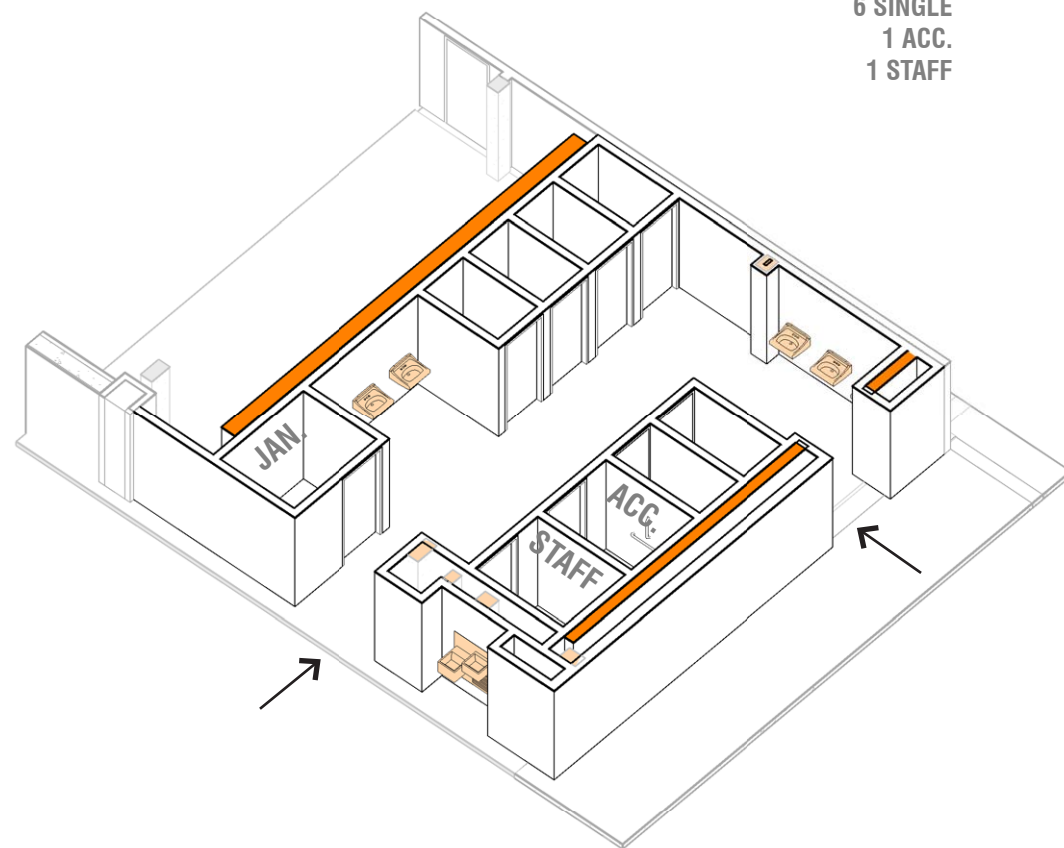
BUILDING DESIGN SERVICES SAMPLE RESTROOM LAYOUT



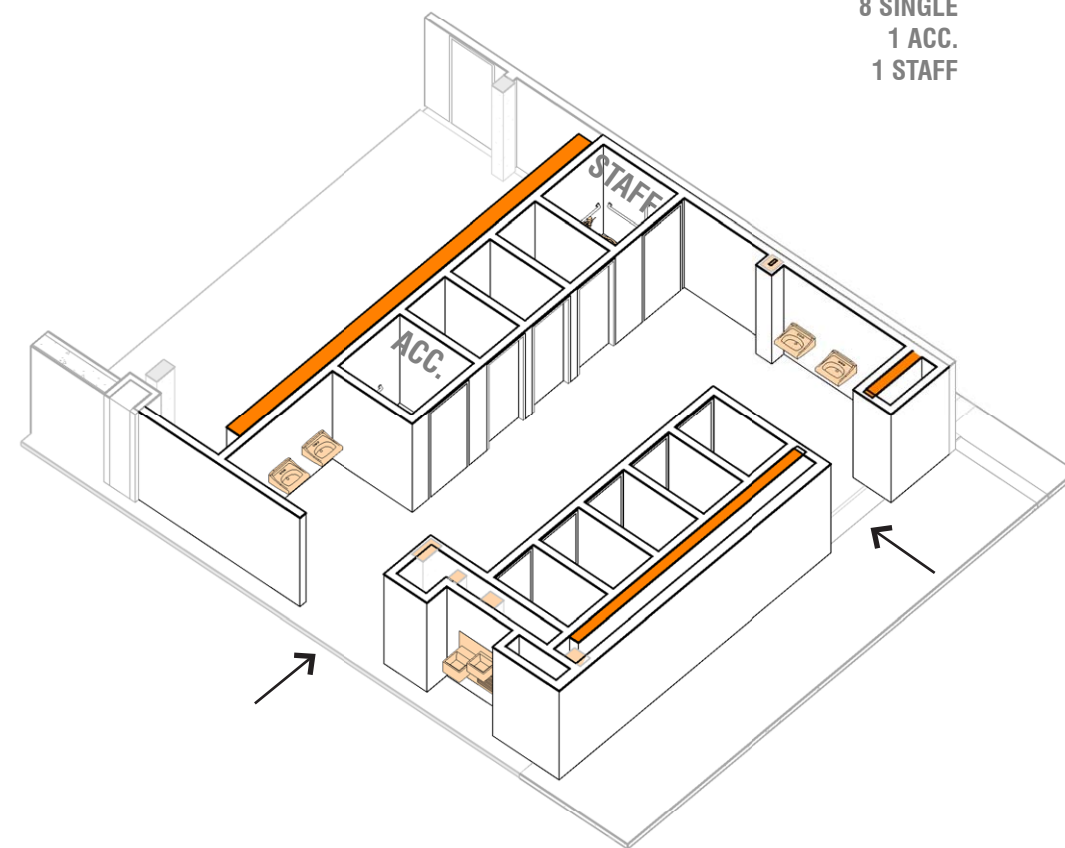
NE RESTROOM BLOCK  
ALL USER OPTIONS



**OPTION A**  
6 SINGLE  
1 ACC.  
1 STAFF

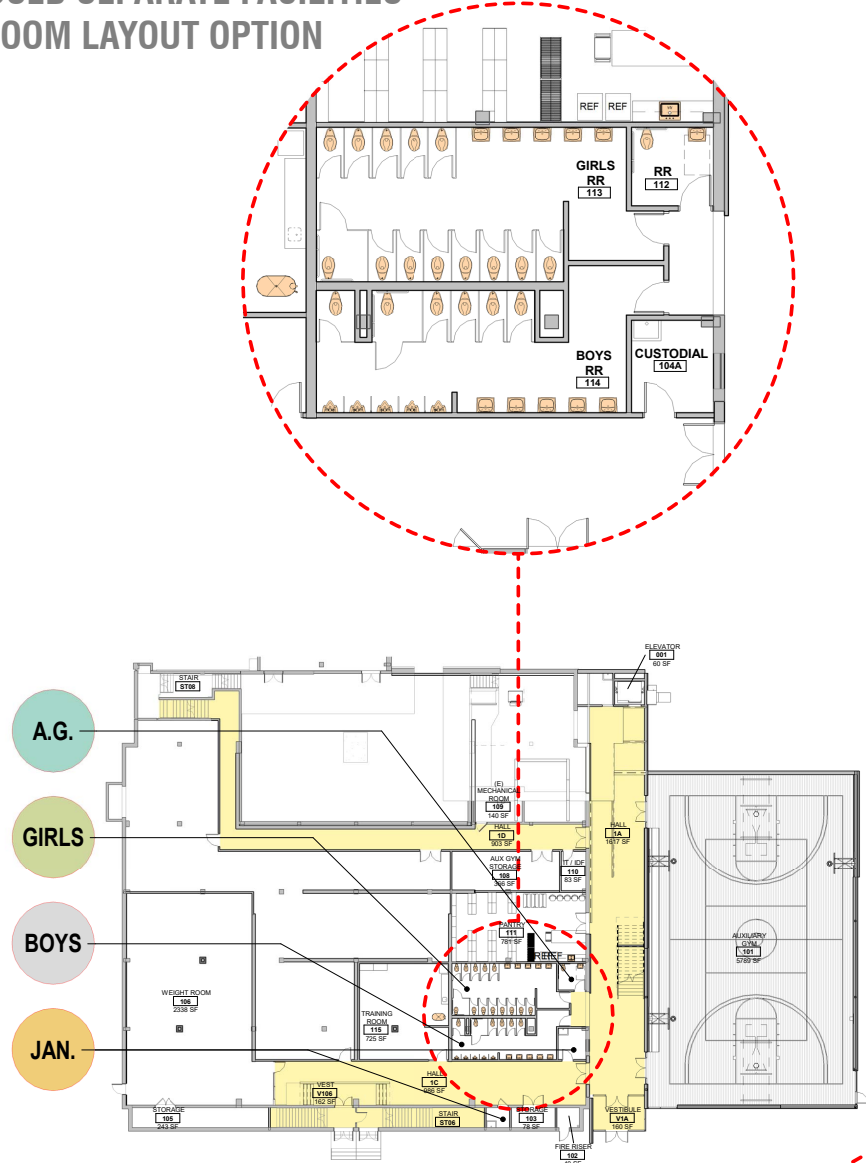


**OPTION B**  
8 SINGLE  
1 ACC.  
1 STAFF





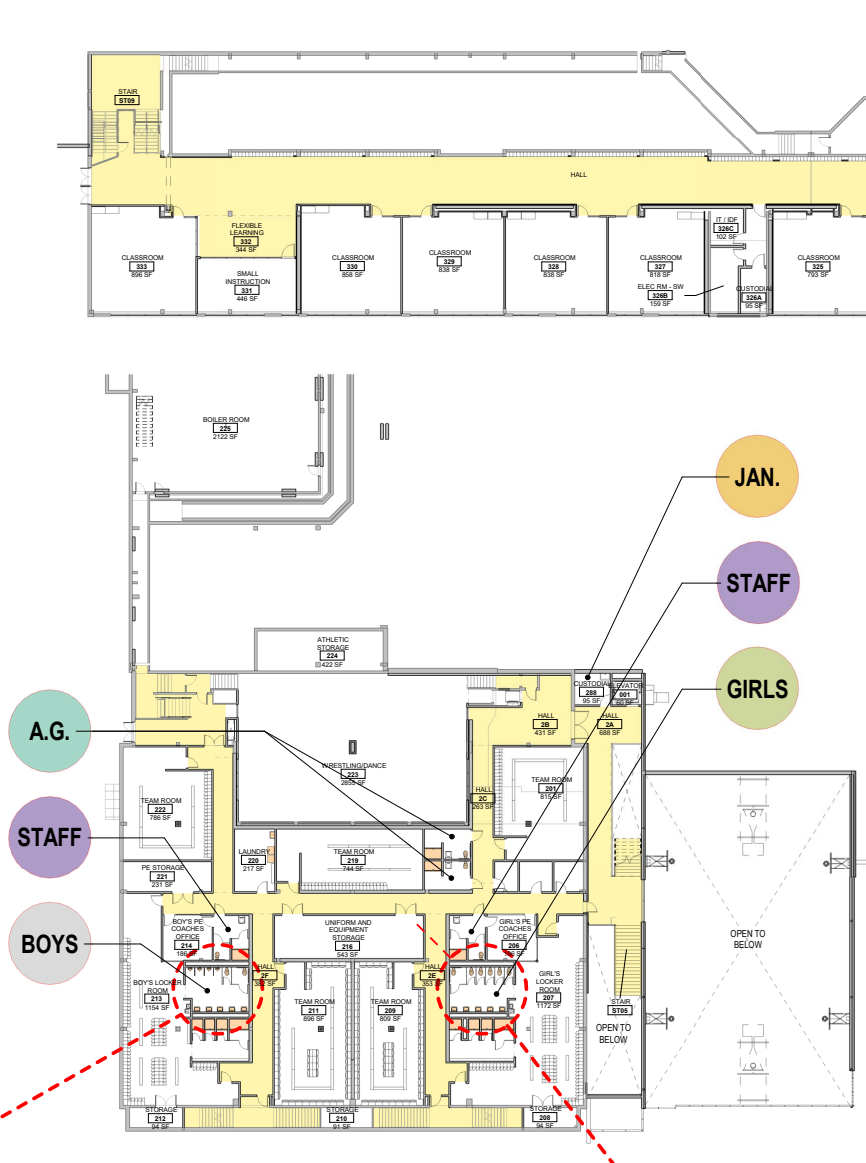
**PROPOSED SEPARATE FACILITIES  
RESTROOM LAYOUT OPTION**



**LEVEL 1 FIXTURE COUNT (PROPOSED)**

GIRLS W.C. -	13
BOYS W.C. -	6
BOYS URINAL -	5
A.G. W.C. -	1
STAFF W.C. -	0
<b>SUBTOTAL W.C. / URINAL -</b>	<b>25</b>
GIRLS LAV. -	5
BOYS LAV. -	5
A.G. LAV. -	1
STAFF LAV. -	0
<b>SUBTOTAL LAV. -</b>	<b>11</b>

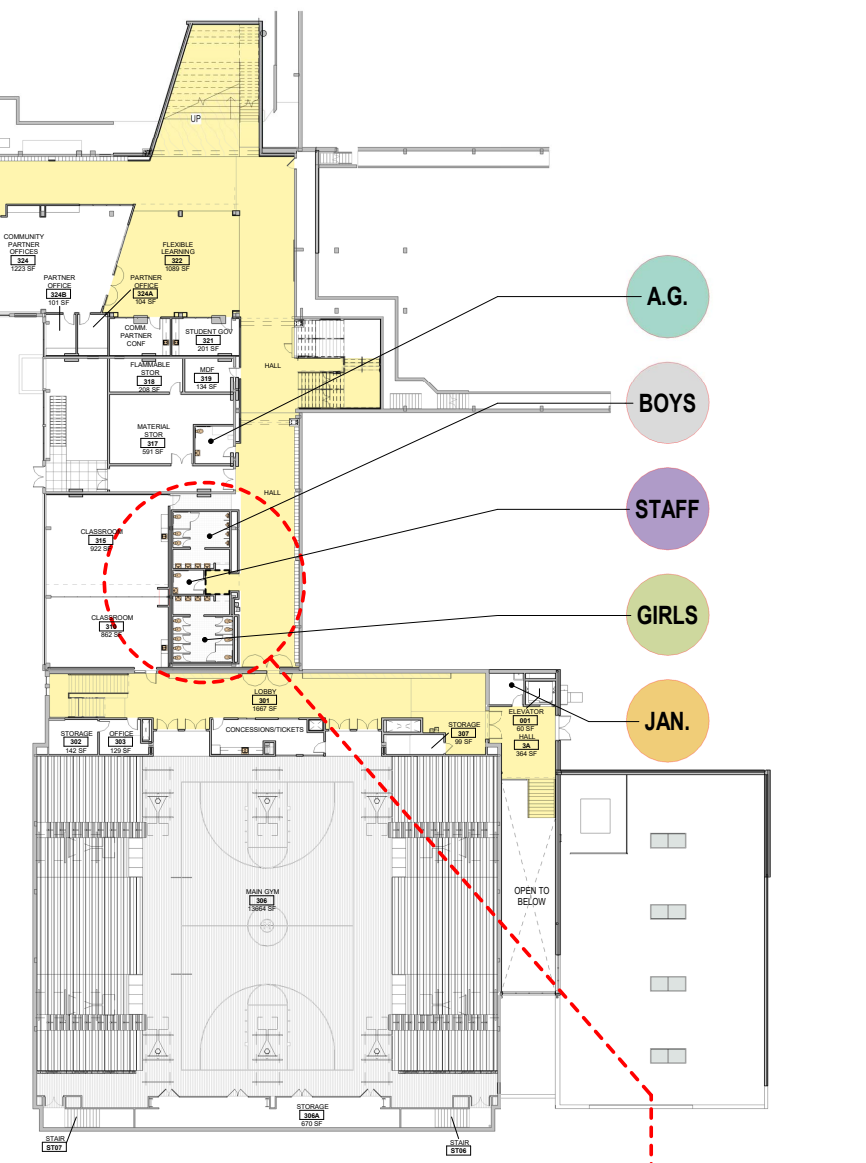
**LEVEL 1**



**LEVEL 2 FIXTURE COUNT (PROPOSED)**

GIRLS W.C. -	6
BOYS W.C. -	2
BOYS URINAL -	4
A.G. W.C. -	2
STAFF W.C. -	2
<b>SUBTOTAL W.C. / URINAL -</b>	<b>16</b>
GIRLS LAV. -	5
BOYS LAV. -	5
A.G. LAV. -	2
STAFF LAV. -	2
<b>SUBTOTAL LAV. -</b>	<b>14</b>

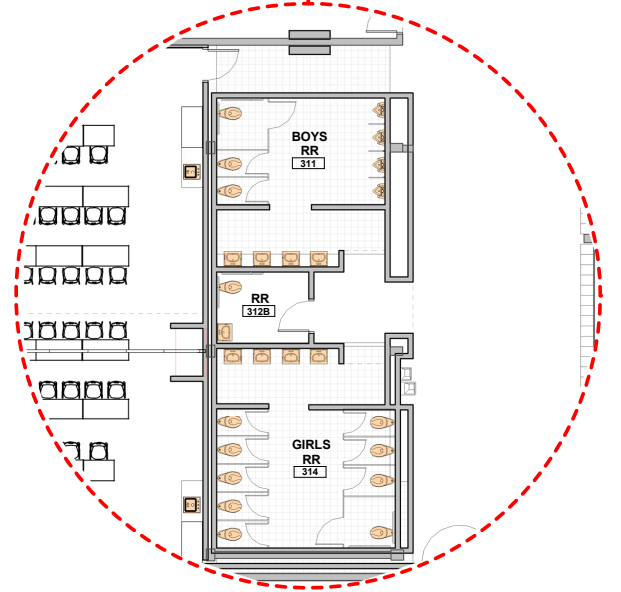
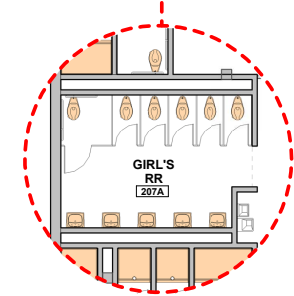
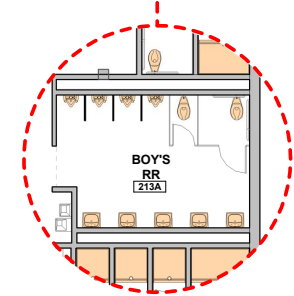
**LEVEL 2**



**LEVEL 3 FIXTURE COUNT (PROPOSED)**

GIRLS W.C. -	9
BOYS W.C. -	3
BOYS URINAL -	4
A.G. W.C. -	1
STAFF W.C. -	1
<b>SUBTOTAL W.C. / URINAL -</b>	<b>18</b>
GIRLS LAV. -	4
BOYS LAV. -	4
A.G. LAV. -	1
STAFF LAV. -	1
<b>SUBTOTAL LAV. -</b>	<b>10</b>

**LEVEL 3**

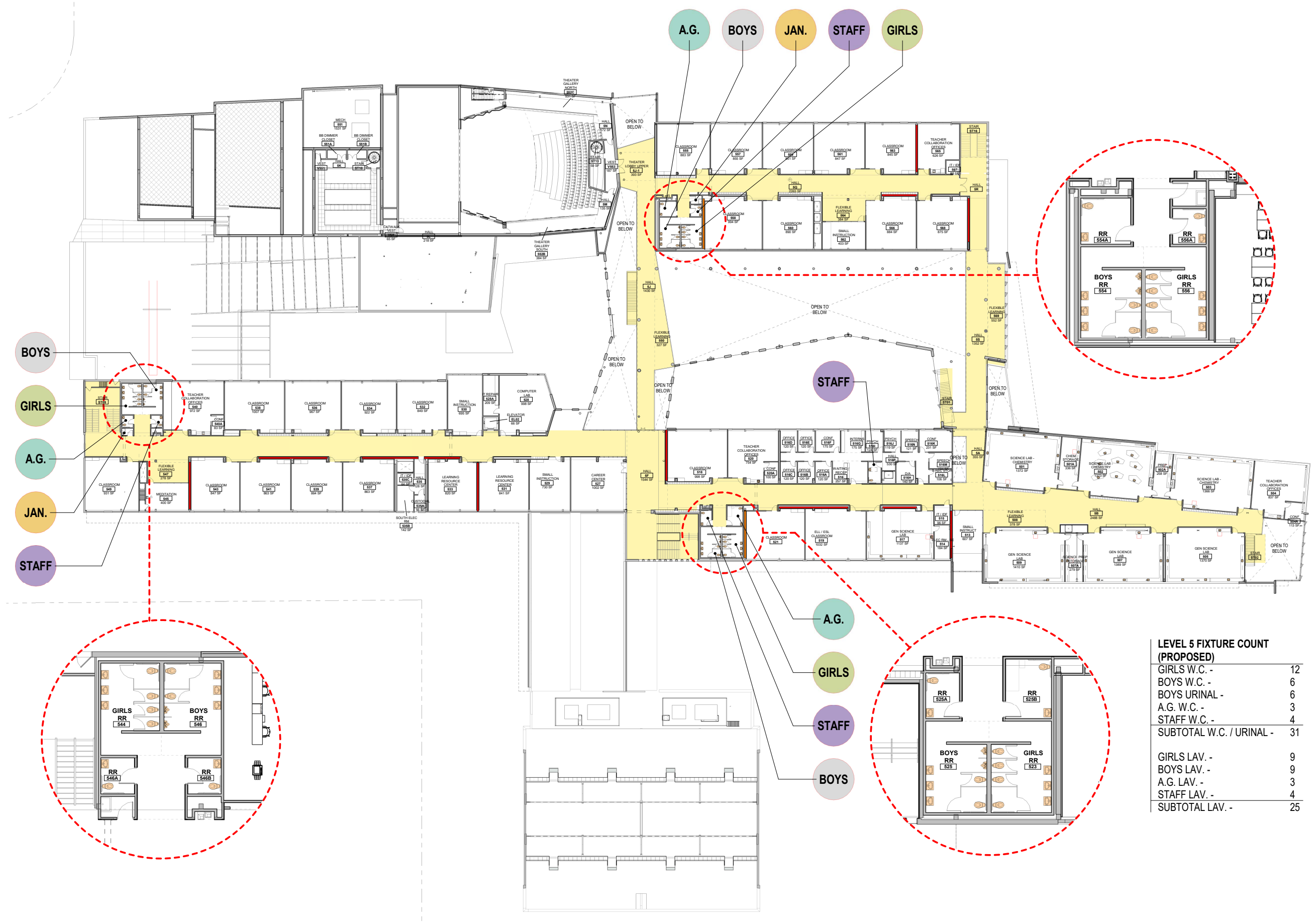




LEVEL 4

**LEVEL 4 FIXTURE COUNT (PROPOSED)**

GIRLS W.C. -	12
BOYS W.C. -	6
BOYS URINAL -	6
A.G. W.C. -	8
STAFF W.C. -	9
CHILDS W.C. -	2
<b>SUBTOTAL W.C. / URINAL -</b>	<b>43</b>
GIRLS LAV. -	9
BOYS LAV. -	9
A.G. LAV. -	8
STAFF LAV. -	9
CHILDS LAV. -	2
<b>SUBTOTAL LAV. -</b>	<b>37</b>



- BOYS
- GIRLS
- A.G.
- JAN.
- STAFF

- A.G.
- BOYS
- JAN.
- STAFF
- GIRLS

STAFF

A.G.

GIRLS

STAFF

BOYS

LEVEL 5

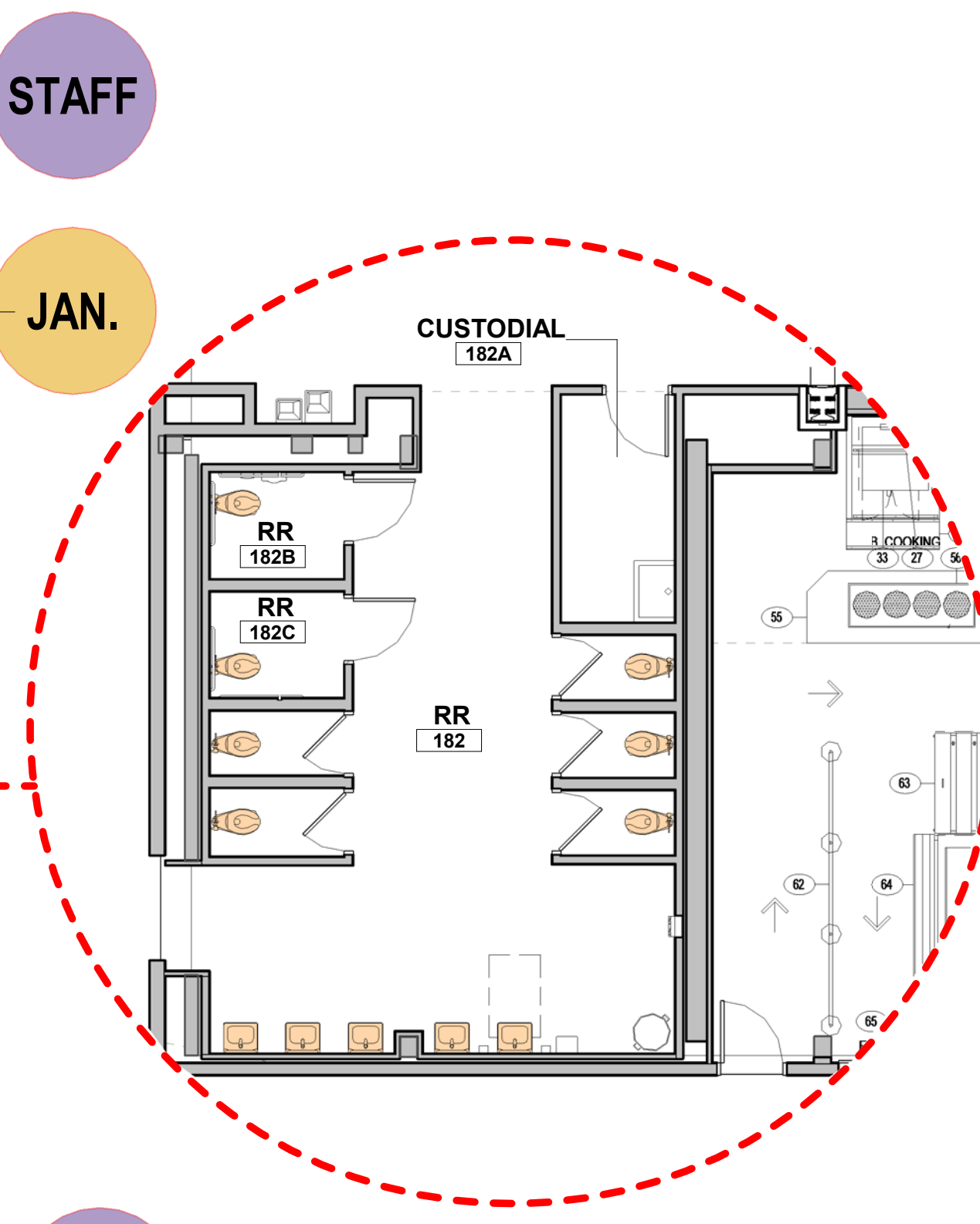
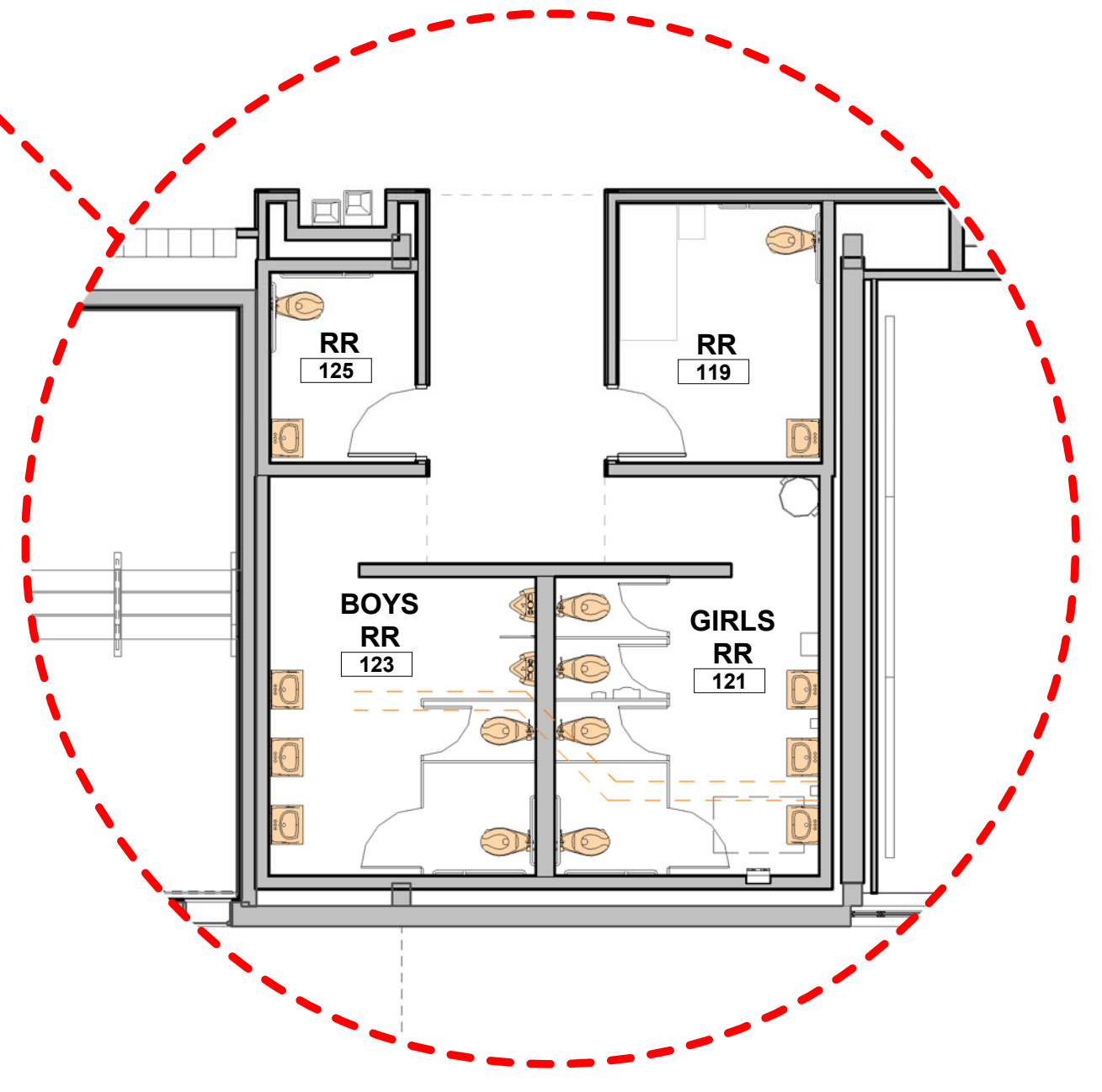
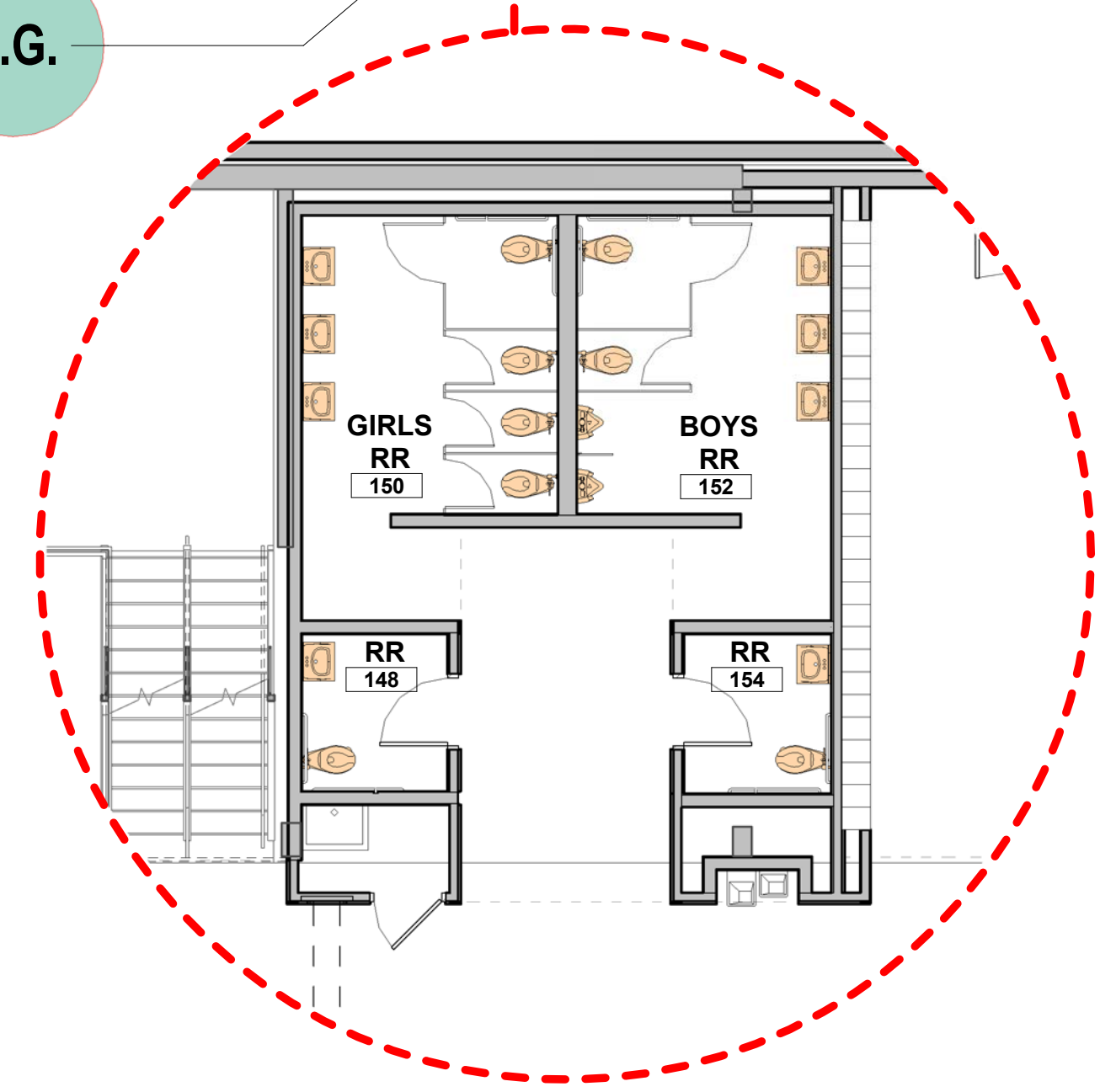
**LEVEL 5 FIXTURE COUNT (PROPOSED)**

GIRLS W.C. -	12
BOYS W.C. -	6
BOYS URINAL -	6
A.G. W.C. -	3
STAFF W.C. -	4
<b>SUBTOTAL W.C. / URINAL -</b>	<b>31</b>
GIRLS LAV. -	9
BOYS LAV. -	9
A.G. LAV. -	3
STAFF LAV. -	4
<b>SUBTOTAL LAV. -</b>	<b>25</b>





STAFF  
 CHILDS  
 STAFF  
 BOYS  
 GIRLS  
 A.G.  
 JAN.  
 STAFF  
 A.G.

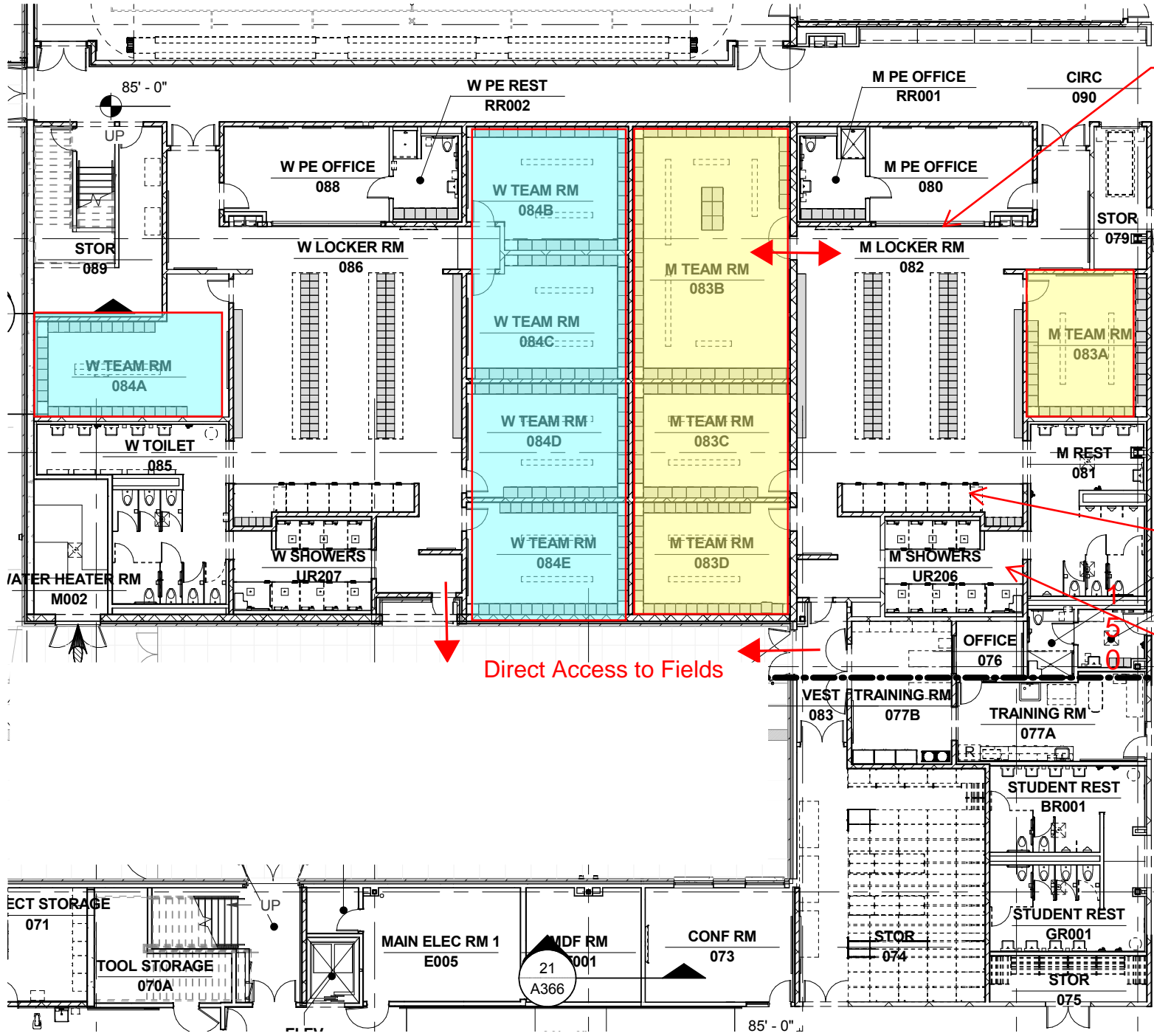


**LEVEL 1 FIXTURE COUNT (PROPOSED)**

GIRLS W.C. -	8
BOYS W.C. -	4
BOYS URINAL -	4
A.G. W.C. -	13
STAFF W.C. -	9
CHILDS W.C. -	2
SUBTOTAL W.C. / URINAL -	41
GIRLS LAV. -	6
BOYS LAV. -	6
A.G. LAV. -	12
STAFF LAV. -	8
CHILDS LAV. -	2
SUBTOTAL LAV. -	35



# Beaverton Mountainside HS



Office Window to Lockers

(5) 300 sf Girls Team rooms

(1) 600 sf Boys  
(3) 300 sf Boys Team rooms

Access only from Locker Rooms

7 Changing Stalls

(9) 3' x 4' shower stalls

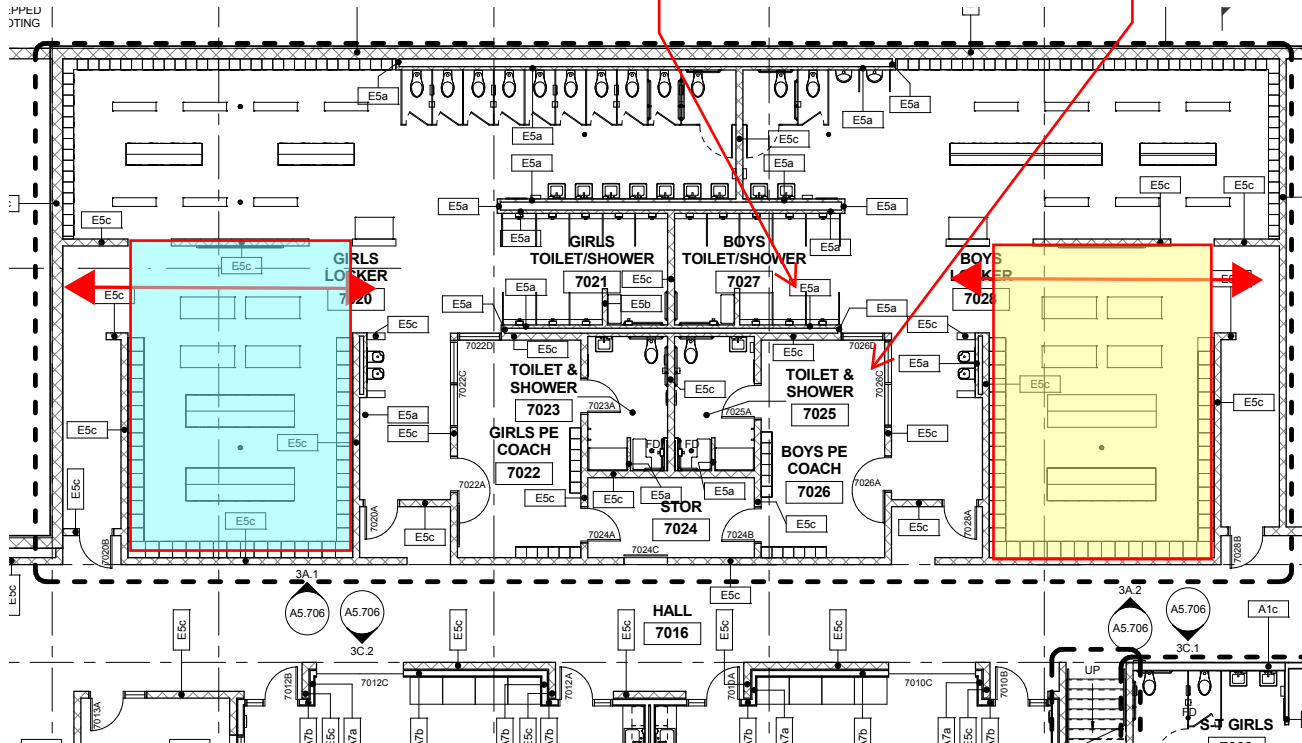
Direct Access to Fields

# PPS Franklin HS

On  
Lock

(9) 3' x 4' shower stalls

Office Window to Lockers

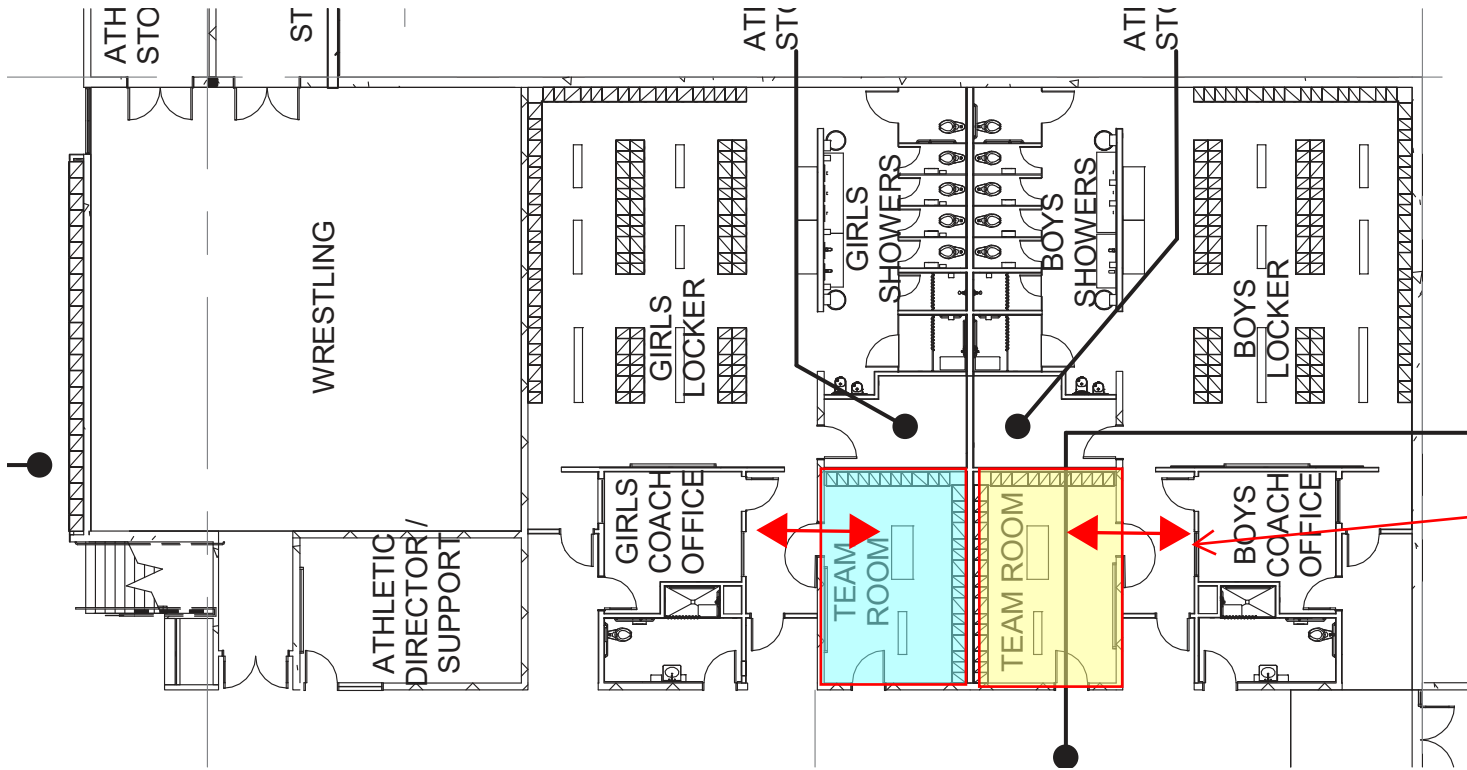


(1) 600sf Girls  
Team room /  
Alcove

(1) 600 sf Boys  
Team room /  
Alcove

Access only  
from Locker  
Rooms - open  
to lockers w/ no  
doors

# PPS Grant HS



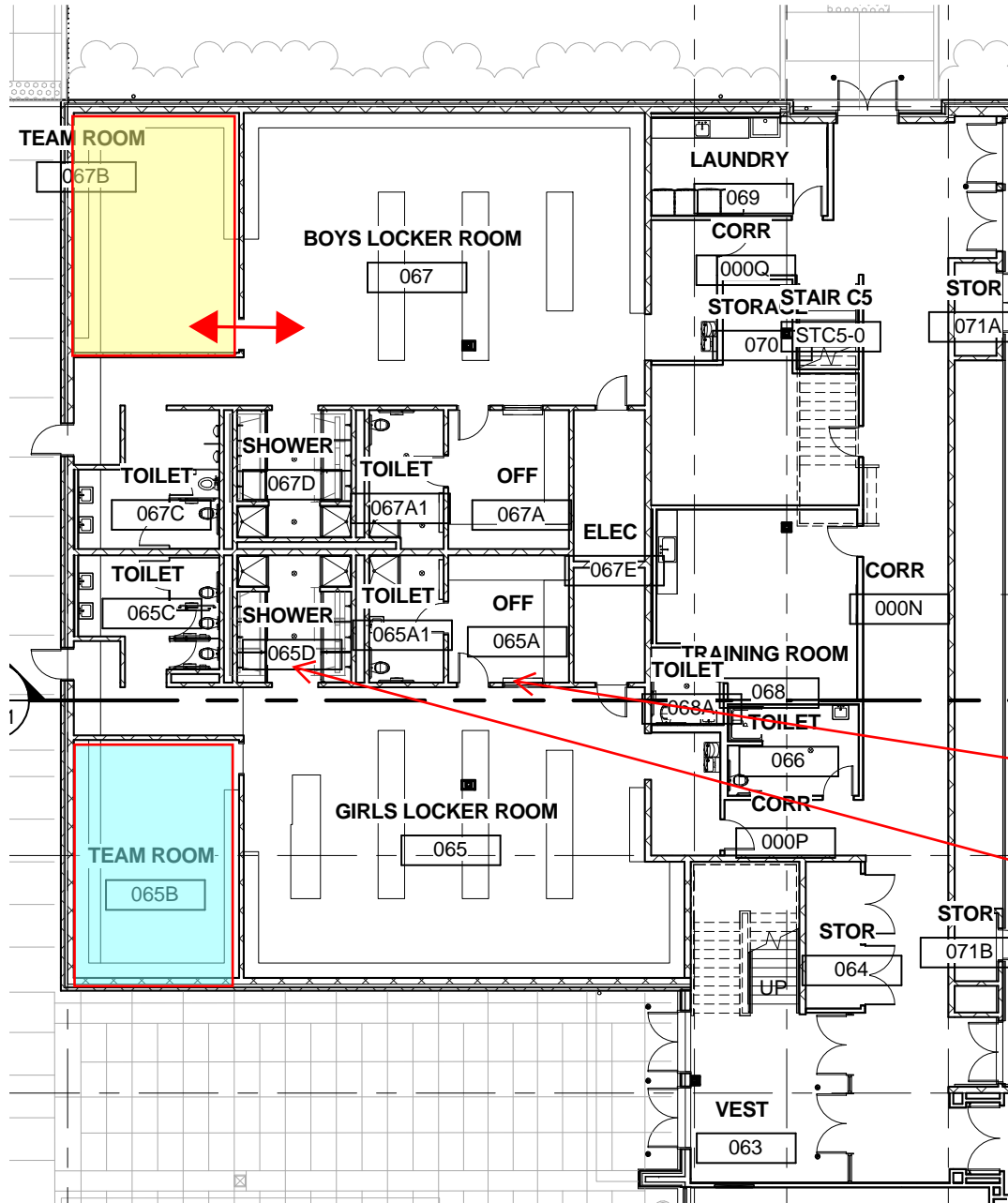
(1) 250 sf Girls Team room

(1) 250 sf Boys Team room

Access only from Locker Rooms

Window from Office to entry vestibule

# PPS Roosevelt High School



(1) 300 sf Girls Team room

(1) 300 sf Boys Team room

Access only from Locker Rooms / no door

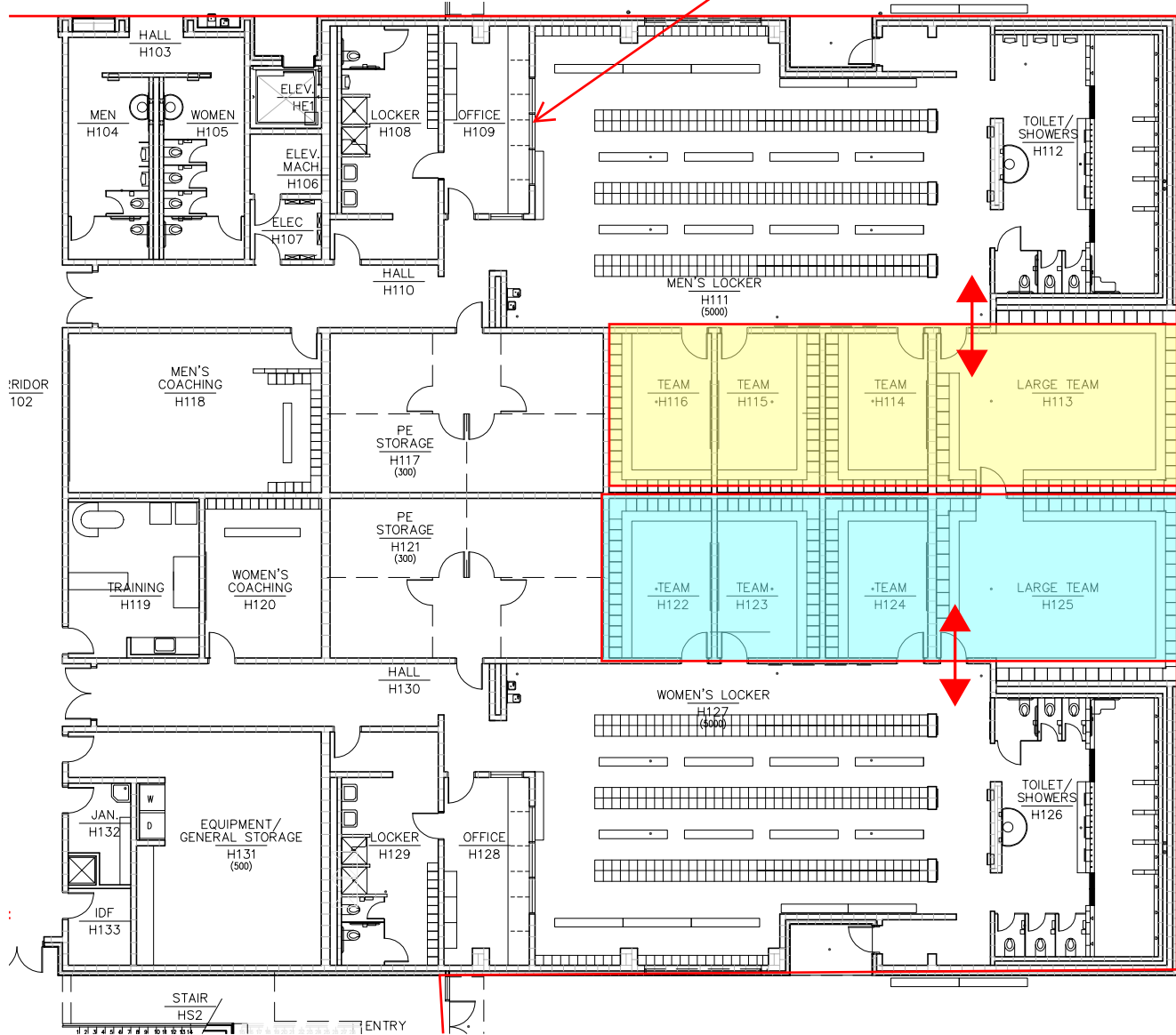
Window from office to Lockers

(8) 3x4 shower stalls



# Clackamas High School 2005

Window from Office  
to Lockers

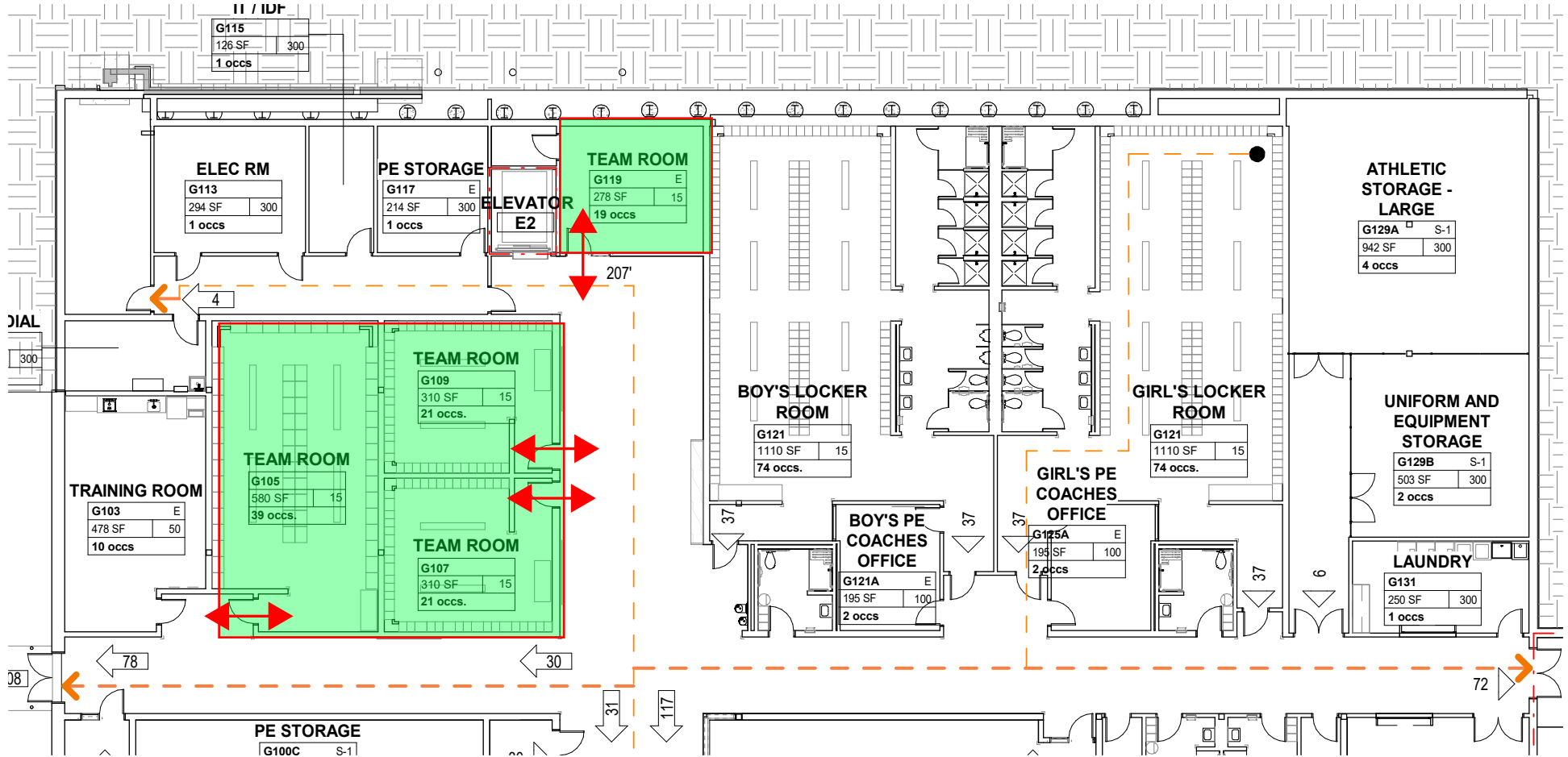


(3) 300 sf Girls  
(1) 600 sf Girls  
Team rooms

(3) 300 sf Boys  
(3) 300 sf Boys  
Team rooms

Access only  
from Locker  
Rooms

# Madison High School

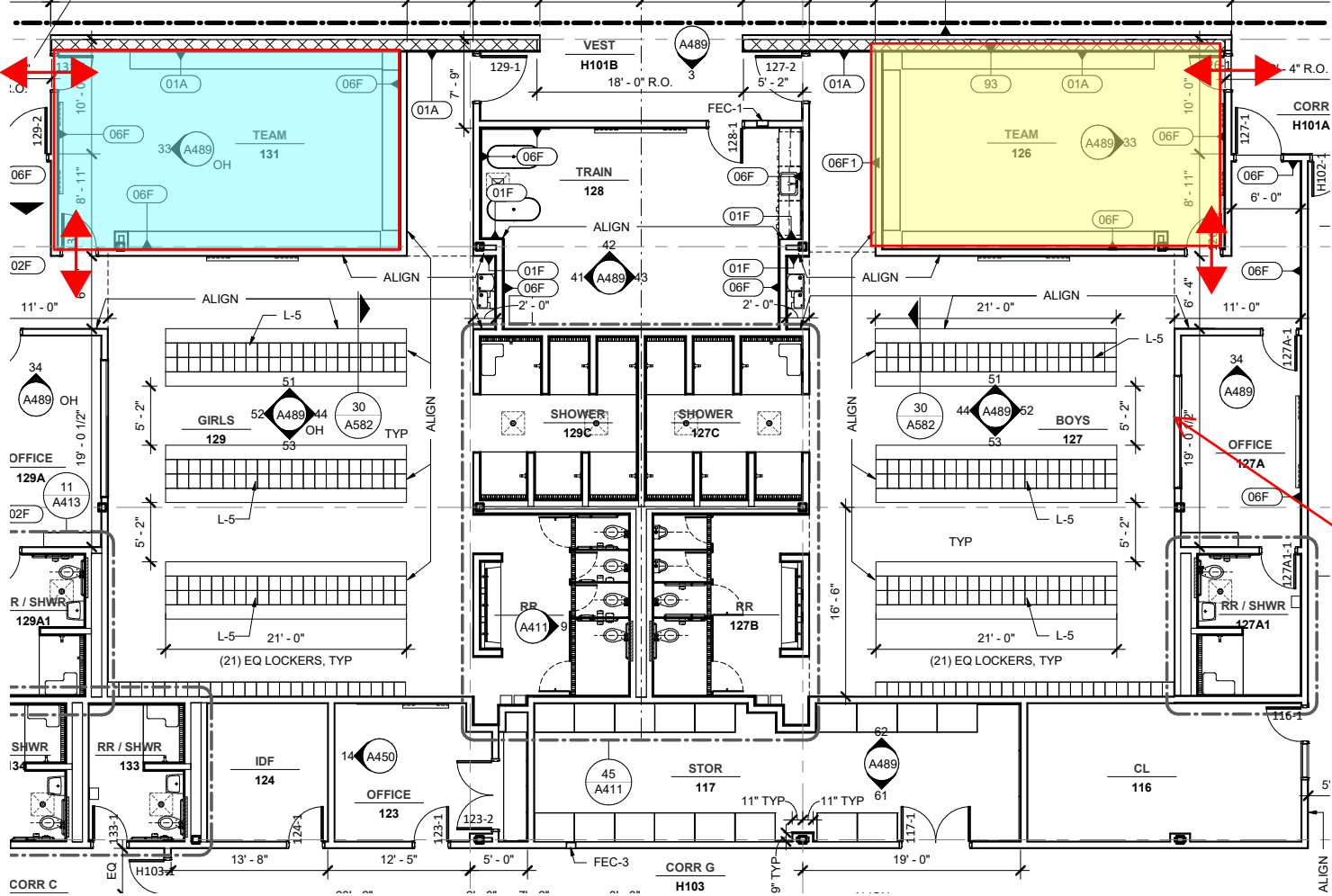


(3) 300 sf Non Gender  
(1) 600 sf Non Gender  
Team rooms

(3) 300 sf Boys  
(3) 300 sf Boys  
Team rooms

Access only from Hallway

# PPS Lincoln HS



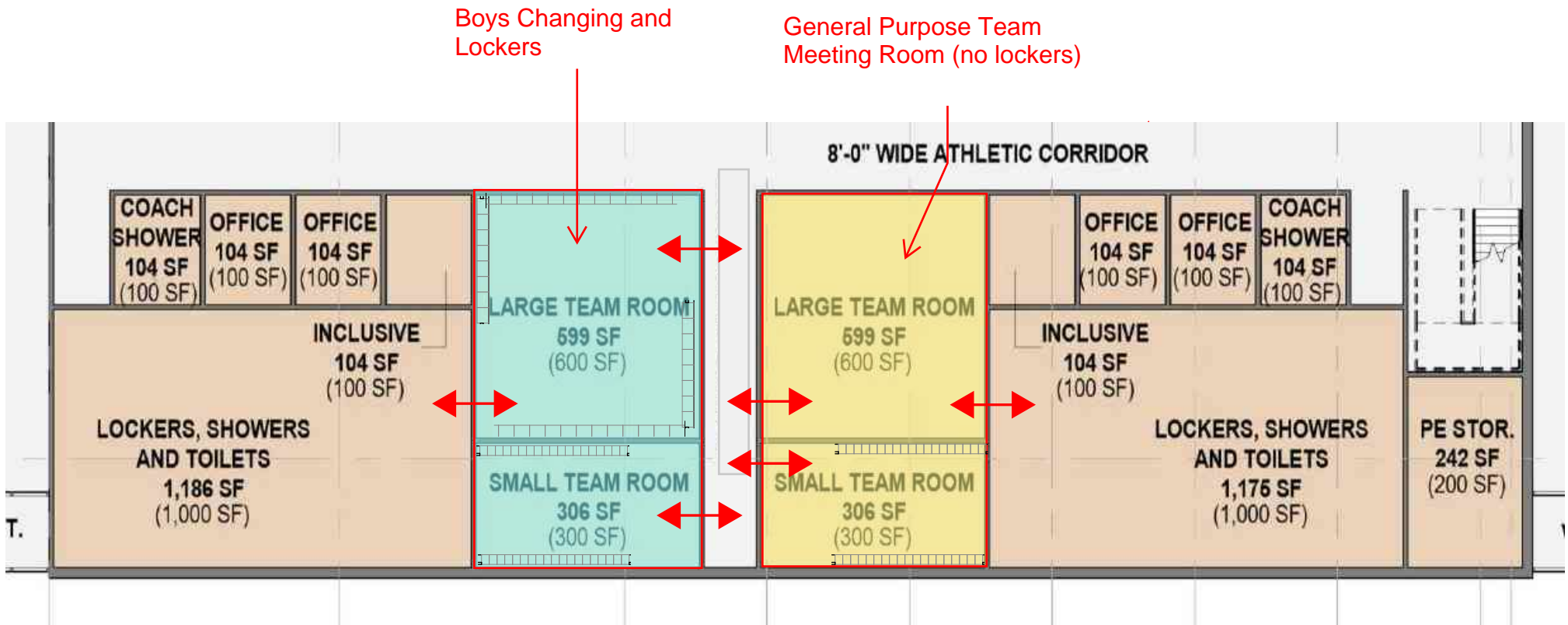
(1) 600 sf Girls Team room

(1) 600 sf Boys Team room

Access from both Locker Room and Hallway

Window from Office to Locker room

# North Eugene High School Proposed V 1



(1) 600 sf Girls  
(1) 600 sf Boys  
Team room

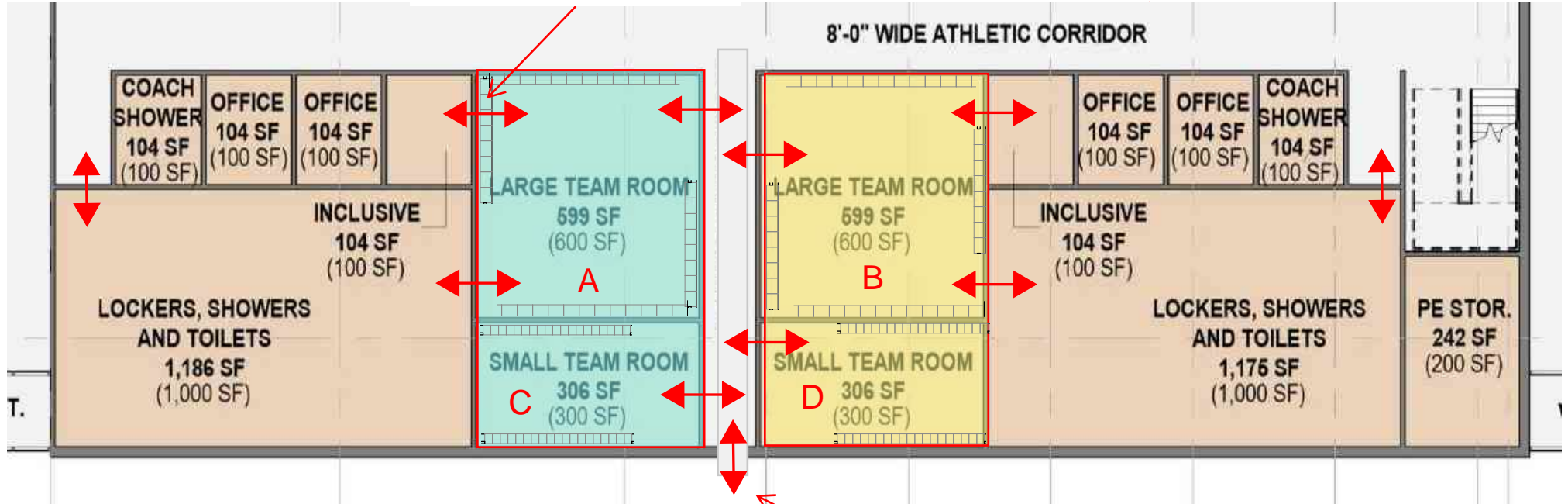
(2) 300 sf Non- Gender Team Rooms

Access from both Locker Room and  
Hallway



# North Eugene High School Proposed V 2

Direct Access to Inclusive Shower/ Restroom



- (1) 600 sf Team Room A
- (1) 600 sf Team Room B

- (2) 300 sf Team Rooms C & D

Access from both Locker Room and Hallway

Access to Fields